

ENVITECH DESIGN SOFTWARE

Redefining Possibilities in technical design

We are at the forefront of technology, dedicated to empowering engineers worldwide with cutting-edge software solutions that unlock the true potential of engineering brilliance.

Fueling Innovation: Innovation drives us forward. We constantly push the boundaries of engineering design, developing state-of-the-art software tools that seamlessly integrate into your workflow. Our user-friendly interfaces and intuitive features streamline the creative process, empowering engineers of all levels to unleash their ingenuity with ease.

Tailored to Excel: Specifically designed for mechanical structures and architecture, our comprehensive suite of applications covers a diverse range of engineering disciplines. Embrace the power to tackle complex challenges head-on, as our software equips you with precise tools to transform your ideas into stunning designs.

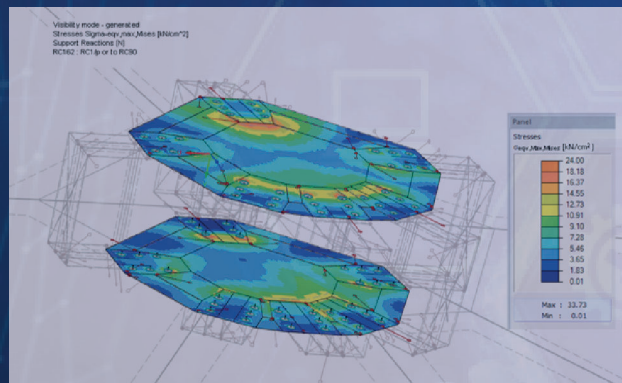
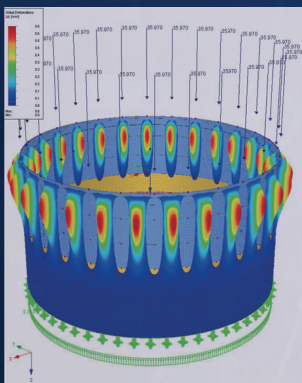
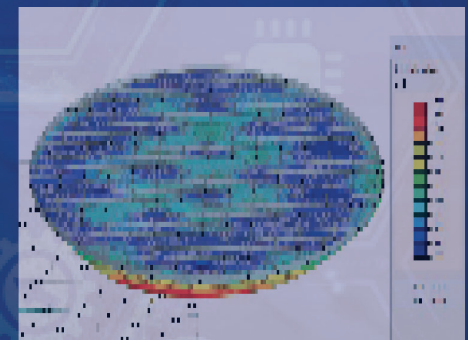
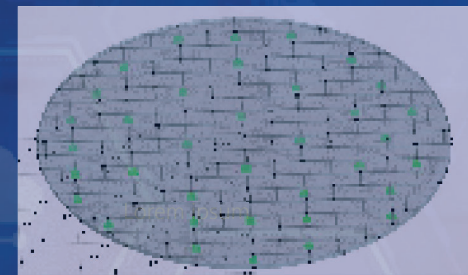
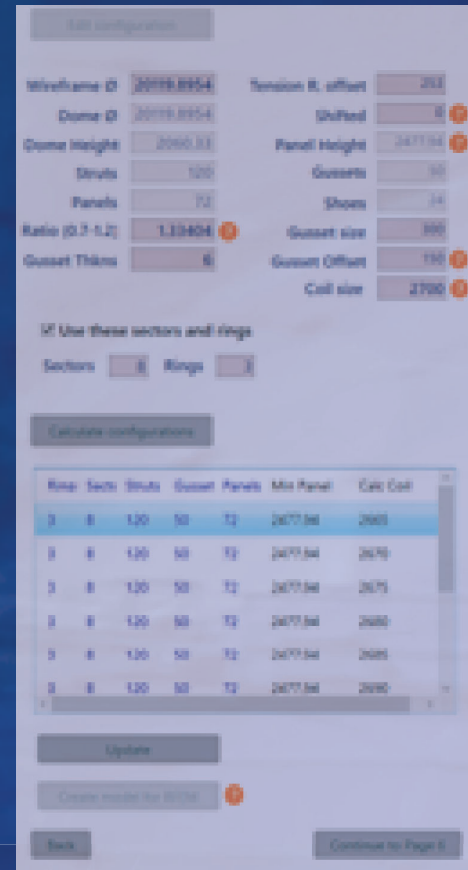
Efficiency and Precision: Our software's cornerstones are efficiency and precision. Seamlessly integrating into your existing applications, our tools enhance productivity and collaboration, propelling your engineering projects to new heights of excellence. Experience unmatched accuracy and reliability in your designs and analyses, setting new standards for performance.

Join the ENVITECH Revolution: Embrace a world of possibilities in engineering design with our software solutions. Together, let's redefine what's possible as we elevate the future of engineering excellence and innovation.

ENVITECH SOFTWARE SOLUTIONS: Empowering Engineers, Unleashing potential.

Our competitive advantage

- **Enhanced Creativity and Efficiency:** Embrace a seamless workflow as ENVITECH DESIGN effortlessly integrates with your current .NET-based applications, propelling your creativity to new heights and maximizing design efficiency.
- **Uncompromising Precision:** Rest assured in the accuracy of your designs and Finite Element Analysis (FEA) calculations. ENVITECH DESIGN 's robust .NET technology integration ensures precise data exchange, enabling engineering solutions of the utmost reliability.
- **Limitless Possibilities:** From intuitive 2D sketches to intricate 3D modeling, ENVITECH DESIGN boasts an all-in-one suite of tools, harmoniously connected to your existing .NET-based engineering applications. Additionally, harness the power of advanced Finite Element Analysis tools to optimize designs for real-world performance and durability.
- **Intuitive Learning, Seamless Adoption:** Facilitate smooth integration with your .NET technology-based tools regardless of your expertise. ENVITECH DESIGN offers an intuitive interface and user-friendly features, allowing engineers of all levels to conduct complex FEA simulations with ease.
- **Effortless Collaboration:** Fostering teamwork and synergy, ENVITECH DESIGN streamlines collaboration across colleagues, facilitating real-time sharing of designs and FEA data in your .NET-enabled applications for enhanced productivity.
- **Safeguard Your Intellectual Property:** We recognize the significance of protecting your intellectual property and sensitive information. ENVITECH DESIGN 's .NET technology integration incorporates state-of-the-art security measures, ensuring the utmost confidentiality and safeguarding your valuable work.
- **Expert Support at Your Service:** Rely on our dedicated customer support team for any assistance you may need during the .NET integration or FEA simulations. We are committed to providing a seamless and exceptional experience for every user.
- **Elevate Engineering Designs with FEA and .NET Integration:** Unlock your engineering potential with advanced Finite Element Analysis and seamless .NET technology integration. Embrace the future of engineering design with ENVITECH DESIGN and achieve unparalleled excellence in your projects



HEAD OFFICE

ENVITECH SERVICES BV

Calandstraat 88R
3125 BB Schiedam
The Netherlands
TEL +31 (0)10 2038516

EMAIL info@envitech.services
WEB www.envitech.services

MIDDLE EAST

ENVITECH ME

Nad Al Sheba 1
Dubai
United Arab Emirates
TEL +971 54 420 6911

EMAIL info@envitrade.ae
WEB www.envitrade.ae