

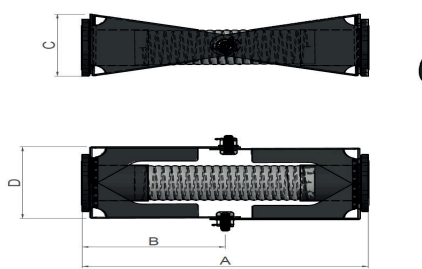


TANK DRAIN SYSTEMS

DRAIN PIVOT

The replacement of tank drain systems is only feasible during periods when the tank is not in use, making the consequences of a malfunctioning drain quite significant. The proper functioning of these drain systems is crucial for the efficient operation and safety of the tank. When a drain system fails to work as intended, it can lead to potential leaks, spillage, or inadequate drainage, which may result in operational disruptions and possible environmental hazards.

By incorporating top-notch materials and adhering to stringent quality standards, we can confidently provide our customers with drain solutions that not only facilitate effective tank maintenance but also contribute to the overall longevity and optimal performance of their tanks. One of these solutions is our drain pivot.



Specifications

- Hose:**
- Inner/outer wire SS316 (1.4401)
 - Lining: Polypropylene (PP)
 - Outer cover: PTFE /PE
 - Operating pressure: -0.85 to +14 bar
 - Temperature range: -20 to +100 deg C
- Frame:**
- Frame parts CS, SS304L (1.4304), SS316L (1.4404)

Features

- Can be supplied in 3", 4", 6", 8", 10" and 12"
- Designed for submerged service
- Maintenance free
- Service life in well in excess of 20 years.
- Suitable for 100% aromatics

Internal diameter	A (mm)	B (mm)	C (mm)	D (mm)	Weight (kg)
3"	615	310	230	195	35
4"	750	375	270	235	47.5
6"	950	475	365	310	85
8"	1,300	650	430	385	135

Solutions

- Drain pivot systems
- Swivel drains
- Hose drains
- Spill check valves
- Design and engineering services

Background

As stated in API and NEN, external floating roof tanks require a roof drain system, which automatically drains the accumulating rainwater off the floating roof.

Primary roof drains shall be sized and positioned to accommodate the rainfall rates of the tank location, preventing the roof from accumulating a water level greater than the design criteria and without allowing the roof to tilt or interfere with its operation.

Roof drains shall be furnished attached to double-flanged, low-type nozzles on the tank shell.

For single deck design external floating roofs, a floating roof sump valve shall be provided at the inlet sump

Primary roof drains shall be resistant to the tank's and shall be free from floating, kinking, or catching on any internal appurtenance or obstruction during operation, and from being crushed by landing legs on the bottom.

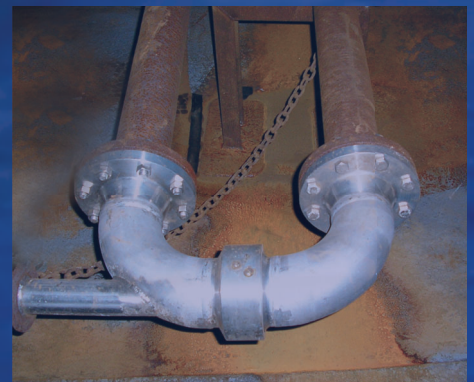
DRAIN HOSES

Tank drain hoses are a proven solution for the challenging draining of rain water on external floating roofs. The major advantage of these hoses is its simplicity in design. It has a limited amount of connections and therefore high reliability. To avoid floating the drain hose includes a lead ballast cable and suspension system. The drain hoses is even able to accommodate frozen drain water. All hoses are supplied electrically continuous.

A longitudinal white stripe is permanently branded on the cover of each hose to ensure correct alignment.

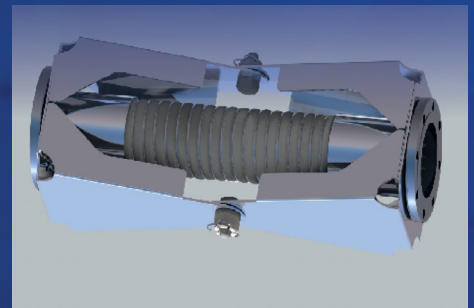
Specification

Cover	Smooth wrapped finish in the following materials:		
Specification	Rubber quality	Content	
ENV904	Nitrile	Aromatic content up to 50%	
ENV908	PVC/Nitrile	Aromatic content up to 70%	
ENV903	Viton®	Aromatic content up to 100%	
Flanges	mild steel nipples with fixed ASA150 R/F other flanges, including bronze and swivels, and material types on request		
Ballast connection	stainless steel threaded section welded to the hose nipple		
Lead ballast	Each hose assembly incorporates a permanently attached lead covered stainless steel cable to prevent the hose from floating in the stored product. The ballast is secured with two threaded stainless steel nuts retaining the cable loop which is itself secured with two stainless steel U type clamps with dou nuts. Clamps and chains for roof attachment are supplied and the roof end of each hose is marked as follows: "ATTACH THIS END TO ROOF"		



SWIVEL DRAINS

Tank drain systems can only be replaced when the tank is out of service, therefore the consequence of a malfunctioning tank drain is significant. To ensure long service life we have developed a tank drain pipe solution with high quality swivels. The drain pipe system is a complete system, including the connections, swivels and the piping required. Please refer to the swivels leaflet for more information on our Swivels



HEAD OFFICE

ENVITECH SERVICES BV

Calandstraat 88R
3125 BB Schiedam
The Netherlands

TEL +31 (0)641291661

EMAIL info@envitech.services
WEB www.envitech.services

MIDDLE EAST

ENVITRADE LLCFZ

Nad Al Sheba 1
Dubai
United Arab Emirates

TEL +971 54 420 6911

EMAIL info@envitrade.ae
WEB www.envitrade.ae

APAC

ENVITECH PTE.LTD

711 Clement west street
2#09-201
SINGAPORE (120711)

TEL +65 9366 2356

EMAIL info@envitech.services
WEB www.envitech.services